



## Parents Instructions for the Rhyming Game

---

- Name the different body parts on the Treasure Map and find them on your own bodies
- Now search for words/things that rhyme with the body parts: e.g. 'leg' rhymes with 'peg'
- You can search both indoors and outdoors
- See how many rhyming words you can find on the Treasure Map
- If you cannot find words that rhyme, you can invent nonsense words that rhyme: e.g. belly – welly, leg – spleg, eye – shmy, hair – zare
- The treasure = the things you find that rhyme with the body parts and the nonsense words you invent



Ear



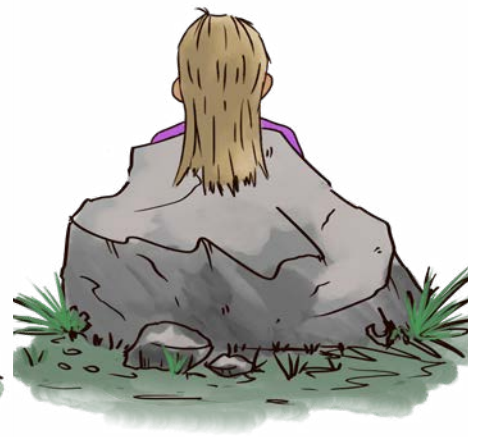
Belly



Eye



Leg



Hair



Forehead



Bum



Tooth